

**TM/LM-4010 & TM/LM-4011
& TM/LM-4011LVDS
POS Monitor User Manual**



Package Contents

- ✓ 9.7” TM/LM-4010 or 10.1” TM/LM-4011
or 10.1” TM/LM-4011LVDS POS
Monitor.....(x 1)
- ✓ Mounting Kits(x 1)

Revision History

Date	Version	Description
2017/09/15	A0	For Preliminary Release
2018/05/10	B0	Remove power on/off description
2020/03/31	C0	Add driver download information
2023/03/07	D0	Add TM/LM-4011LVDS model
2024/05/31	E0	The mechanical part has modified the hinge neck cover which add two screws to fix.

SOME IMPORTANT NOTES

FCC NOTES

This system meets industry & government requirements and applicable standards. This equipment generates, uses, and can radiate radio frequency energy and, if not installed and used in accordance with the instructions manual, may cause interference to radio communications. It has been tested and found to comply with limits for a Class A digital device pursuant to subpart B of Part 15 of FCC Rules, which are designed to provide reasonable protection against interference when operated in a commercial environment. Operation of this equipment in a residential area is likely to cause interference in which case the user at his own expense will be required to take whatever measures to correct the interference.

This device complies with part 15 of the FCC Rules. Operation is subject to the following two conditions: (1) This device may not cause harmful interference, and (2) this device must accept any interference received, including interference that may cause undesired operation.

CE CLASS A WARNING

This equipment is compliant with Class A of CISPR 32. In a residential environment this equipment may cause radio interference.

AVERTISSEMENT CE CLASSE A

Cet équipement est conforme à la classe A de CISPR 32. Dans un environnement résidentiel, cet équipement peut provoquer des interférences radio.

WARRANTY LIMITS

Warranty will terminate automatically when the machine is opened by any person other than the authorized technicians. The user should consult his/her dealer for the problem happening. Warranty voids if the user does not follow the instructions in application of this merchandise. The manufacturer is by no means responsible for any damage or hazard caused by improper application.

LIMITES DE GARANTIE

La garantie prend fin automatiquement lorsque la machine est ouverte par une personne autre que les techniciens autorisés. L'utilisateur doit consulter son revendeur pour le problème qui se produit. La garantie s'annule si l'utilisateur ne suit pas les instructions d'application de cette marchandise. Le fabricant n'est en aucun cas responsable de tout dommage ou danger causé par une mauvaise application.

警告

為避免電磁干擾，本產品不應安裝或使用於住宅環境。

SAFETY INSTRUCTIONS

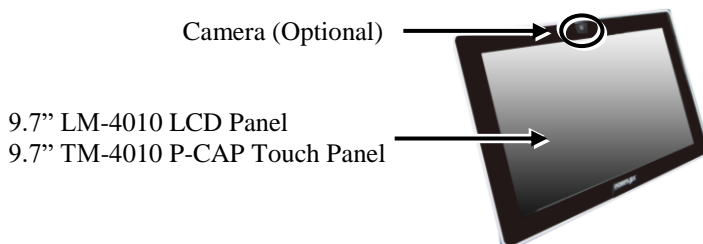
This equipment is not suitable for use in locations where children are likely to be present.

CONSIGNES DE SÉCURITÉ

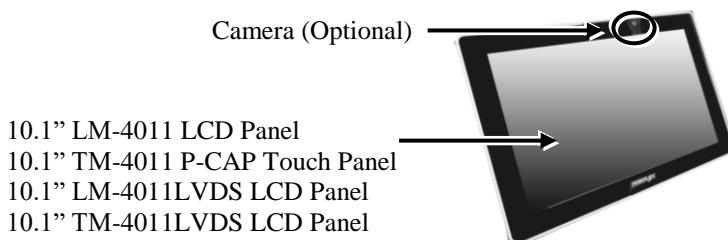
Cet équipement ne convient pas à une utilisation dans des endroits où des enfants.

Views of TM/LM-4010 & TM/LM-4011 & TM/LM-4011LVDS

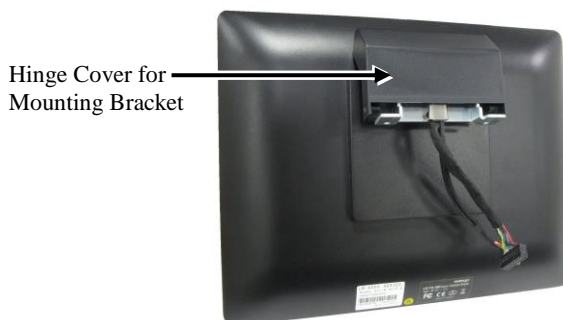
Front View of TM/LM-4010



Front View of TM/LM-4011 & TM/LM-4011LVDS



Rear View



Mounting your Monitor to RT-series POS Terminals

The following instructions are provided to help you mount your TM/LM monitor to Posiflex RT-series POS terminals. During installation, please ensure the terminal is properly turned off and disconnected from the power sources to avoid potential hazards.

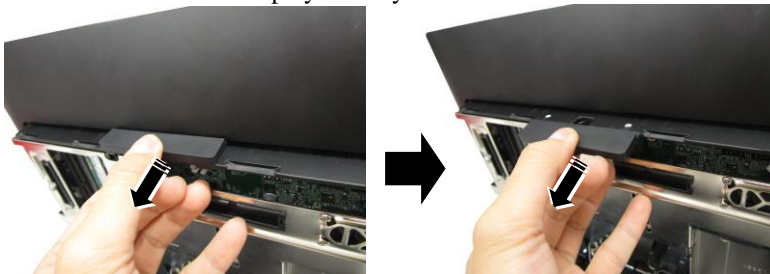
1. Remove the system back cover.
 - 2.1 If the system back cover is fire-resistant, first locate the screw as indicated in the figure, and then remove it.



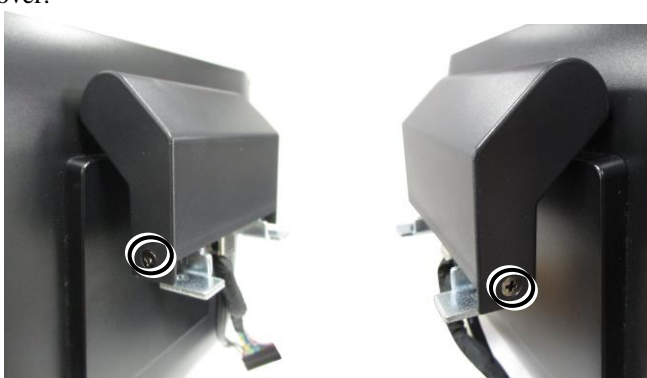
- 2.2 Hold down the release lever at the bottom of the system back cover and then pulling the cover outwards.



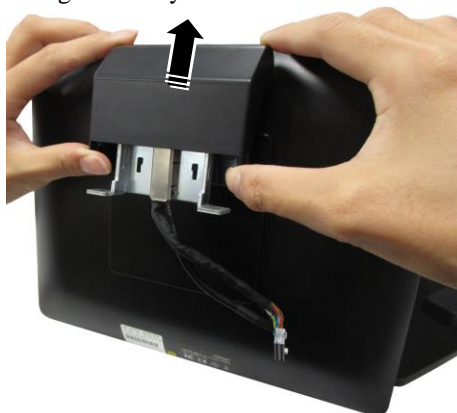
2. Remove the 2nd display dummy cover.



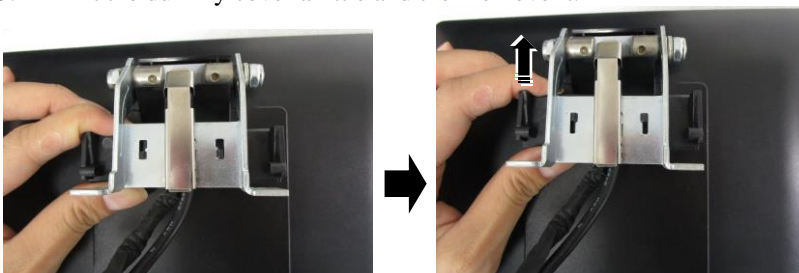
3. Remove the two countersunk head screws on both sides of the hinge cover.

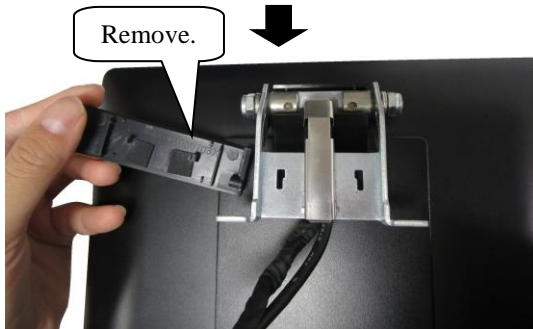


4. Remove the hinge cover by both hands.

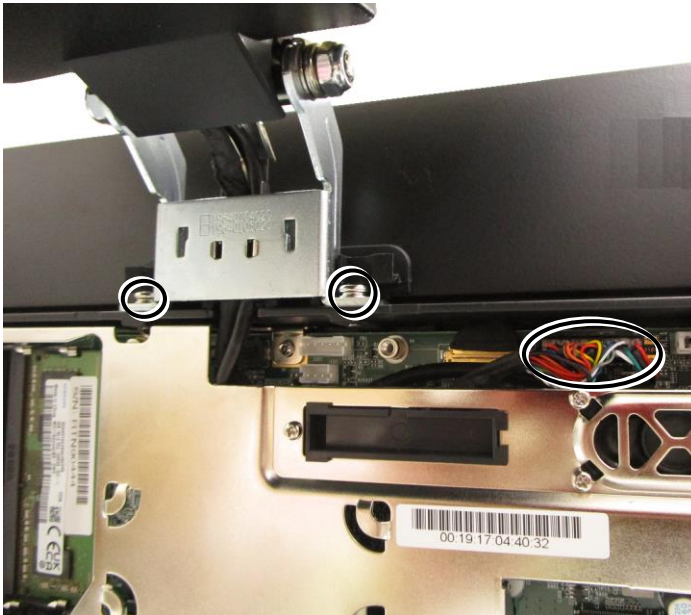


5. Lift the dummy cover a little and then remove it.

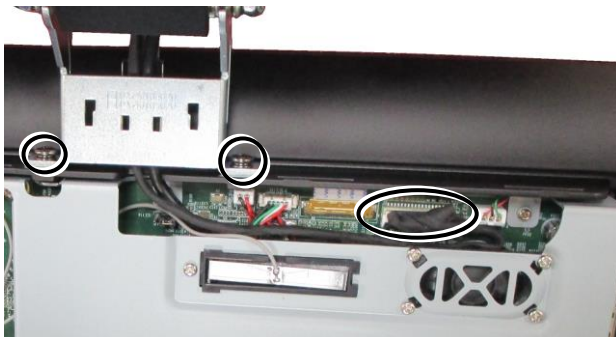




6. **For TM/LM-401x**, we'll insert the cable to the internal VGA port from the mainboard of RT-series terminal, and tuck the extra cable inside the system compartment. Fix the 2nd display hinge to the RT-series terminal with two #6/32 screws.



For **TM/LM-4011LVDS**, we'll insert the cable to the internal LVDS connector from the mainboard of **RT-1016A-G2** terminal, and tuck the extra cable inside the system compartment.

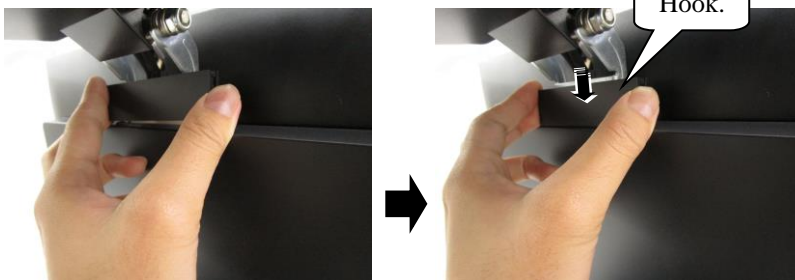


7. Place back the system back cover from top side to close the system compartment of RT-series terminal.u



8. Install the dummy cover to the hinge bracket. Make sure the cover is hooked on the hinge bracket like below picture.





9. Close the hinge cover.



10. Fix the two original countersunk head screws on both sides of the hinge cover.



11. Tilt the monitor screen to your desired angle. While setting up the tilting adjustment, be careful NOT to press on the LCD panel.



Identifying your Monitor as Secondary Touchscreen Monitor in Extended Mode

In the following section the related descriptions will be offered to help you set up TM series as the extended monitor when you attempt to extend the desktop across multiple monitors

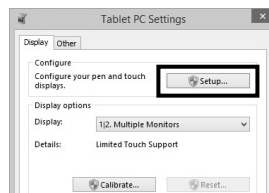
For TM-4010/4011/4011LVDS Models with P-CAP Touchscreen

If your monitors are TM-4010/4011/4011LVDS models, you may configure the display settings from Control Panel in Microsoft Windows to identify the monitor as the secondary touchscreen monitor. Please go through the below steps to complete configuration.

1. Make sure that the monitor is well connected to your POS terminal.
2. Go to **Control Panel>Display Settings**, change your display settings to extended mode.
3. Go to **Control Panel**, and then click on **Tablet PC Settings** item.



4. In **Tablet PC Settings** dialogue box, click on **Setup** button.



5. Following the instruction shown on the screen, click on the screen that you want to identify as the primary touchscreen display.

Touch this screen to identify it as the touchscreen.

If this is not the Tablet PC screen, press Enter to move to the next screen. To close the tool, press Esc.

6. Press **Enter** button to proceed the configuration.

Press Enter to proceed to the next step to complete your configuration

7. Click on the screen you want to use as the secondary touchscreen display.

Touch this screen to identify it as the touchscreen.

If this is not the Tablet PC screen, press Enter to move to the next screen. To close the tool, press Esc.

Powering ON/OFF your Monitor

To start up the monitor, please make sure that the monitor is well connected to POS terminals and electricity is supplied to the monitor through POS terminal.

Installing Drivers

Please visit Posiflex official website to download and install the related drivers.
(<http://Download.posiflex.com/en-global/Download/download>)

Setting up Display Resolution for Your Monitor

The below chart defines the list of recommended display settings for TM/LM monito. Improper display configuration will prevent the monitor from properly displaying the image and lead to a warning message of “out of range” prompted on the screen.

9.7” TM/LM-4010

Display Resolution	Horizontal Frequency (KHz)	Refresh Rate (Hz)
640 x 400	37.9	70
640 x 480	31.5	60
	37.9	72
	37.5	75
720 x 400	37.9	70
800 x 600	35.1	56
	37.9	60
	48.1	72
	46.9	75
1024 x 768	48.4	60

10.1” TM/LM-4011 & TM/LM-4011LVDS

Display Resolution	Horizontal Frequency (KHz)	Refresh Rate (Hz)
640 x 480	31.5	60
	37.9	72
	37.5	75
800 x 600	37.9	60
	48.1	72
	46.9	75
1024 x 768	48.4	60
1280 x 720	45.0	60
1280 x 800	49.7	60

Specification

	TM/LM-4011 TM/LM-4011LVDS	TM/LM-4010
Display		
LCD Panel	10.1" TFT LCD	9.7" TFT LCD
Resolution	1280(H) x 800 (V)	1024(H) x 768 (V)
Active Area	216.96mm (H) x 135.60mm (V)	196.61mm (H) x 147.46mm (V)
Viewing Angle	85/85/85/85 degree (U/D/L/R)	70/60/70/70 degree (U/D/L/R)
Contrast Ratio	800 : 1	500 : 1
Brightness	350 cd/m ²	350 cd/m ²
Display Interface	TM/LM-4010 & TM/LM-4011: VGA TM/LM-4011LVDS: LVDS	
Power Supply	TM/LM-4010 & TM/LM-4011: 12V from RT-series VGA Port TM/LM-4011LVDS: 12V from RT-1016A-G2 LVDS connector	
Touch		
Touch type	TM-4011: P-CAP TM-4011LVDS: P-CAP LM-4011: N/A	TM-4010: P-CAP LM-4010: N/A
Interface	TM-4011: USB TM-4011LVDS: USB LM-4011: N/A	TM-4010: USB LM-4010: N/A

*※ The product information and specifications are subject to change without prior notice. To get the detailed information on TM-4010/LM-4010/TM-4011/LM-4011/TM-4011LVDS/LM-4011LVDS please check this model from Posiflex Global Website
(<http://download.posiflex.com/en-global/Download/download>).*

BSMI ROHS

設備名稱：POS螢幕 ， 型號（型式）：TM-4011,LM-4011,TM-4010,LM-4010 Equipment name Type designation (Type)						
單元 Unit	限用物質及其化學符號 Restricted substances and its chemical symbols					
	鉛Lead (Pb)	汞Mercury (Hg)	鎘Cadmium (Cd)	六價鉻 Hexavalent chromium (Cr ⁶⁺)	多溴聯苯 Polybrominated biphenyls (PBB)	多溴二苯醚 Polybrominated diphenyl ethers (PBDE)
面板	○	○	○	○	○	○
外殼	○	○	○	○	○	○
電路板	○	○	○	○	○	○
線材	○	○	○	○	○	○
配件	○	○	○	○	○	○
<p>備考1. “超出0.1 wt %” 及 “超出0.01 wt %” 係指限用物質之百分比含量超出百分比含量基準值。 Note 1 : “Exceeding 0.1 wt %” and “exceeding 0.01 wt %” indicate that the percentage content of the restricted substance exceeds the reference percentage value of presence condition.</p> <p>備考2. “○” 係指該項限用物質之百分比含量未超出百分比含量基準值。 Note 2 : “○” indicates that the percentage content of the restricted substance does not exceed the percentage of reference value of presence.</p> <p>備考3. “—” 係指該項限用物質為排除項目。 Note 3 : The “—” indicates that the restricted substance corresponds to the exemption.</p>						